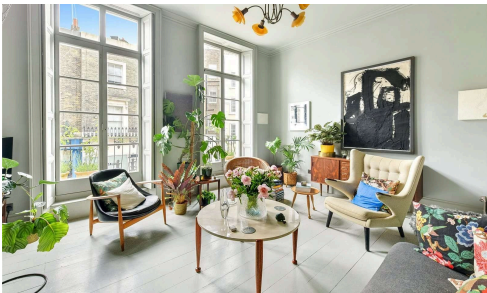


#1093



Immaculately presented family home in the desirable Moreton Triangle

€3,000,000

📍 South London, London

Discover this exquisite Victorian townhouse, complete with its original shopfront, situated in the heart of the highly desirable 'Moreton Triangle' in Pimlico.

This beautiful home, constructed in the 1860s as part of Thomas Cubitt's celebrated development, spans over 2300

Bedrooms

🛏️ 4

Bathrooms

🚿 2

Covered

📏 214 m²

Energy efficiency rating

🌿 D



Buddy Estates



Emilie Dupont

📞 (+44) 7834562987

✉️ e.dupont@buddyestates.com



All information (including but not limited to the property area, floor size, price, address and general property description) on this page is provided as a convenience to you, and has been provided to Buddy Estates by third parties.