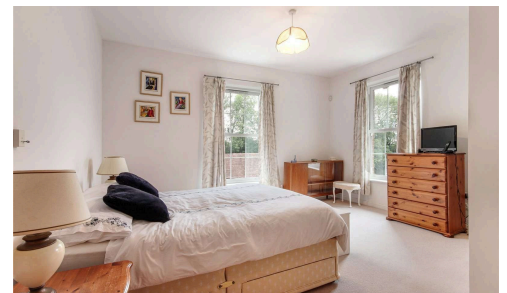


#1095



Attractive and well-located first floor apartment with allocated parking

€475,000

Kent, South East

5 Birch House is a well-presented two bedroom apartment offering spacious and well-proportioned accommodation. The development was built in 2010, and the apartment is offered with no onward chain, benefitting from a modern kitchen and bathroom suites, solid oak internal doors, multi-pane sash windows, an allocated parking space, visitor parking and attractive communal gardens. Also of note is the apartment's excellent location, being within 0.8 miles

Bedrooms

2

Bathrooms

2

Covered

83 m²

Energy efficiency rating

B



Buddy Estates



Emilie Dupont

(+44) 7834562987

e.dupont@buddyestates.com



All information (including but not limited to the property area, floor size, price, address and general property description) on this page is provided as a convenience to you, and has been provided to Buddy Estates by third parties.